

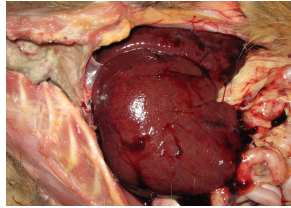
PACKAGING

- 20 L

NUTRIAL®

Veterinary Health Product

Health Canada NN.E3S9



Recommended Use:

- Supports healthy digestive functions.
- Promotes healthy and optimal liver function and metabolism.
- Supports the health and proper functioning of organs, such as the liver, pancreas, gallbladder, kidneys and intestines.

Directions for Use:

Poultry:

- **Chickens and turkeys:** Add and mix 1 L of NUTRIAL per 1000 L of drinking water. Administer during 5 days.
- **Laying hens:** Add and mix 1 L of NUTRIAL per 1000 L of drinking water. Administer during 6 days once a month.

Administration by metering pump:

To prepare a stock solution of 10 L, mix 1L of NUTRIAL in 9 L of drinking water and stir the solution well before dispensing. Set the metering pump to 1:100. Prepare a fresh solution every day.

Adult cattle:

Growing and finishing beef cattle: Top dressed on daily ration 60 ml of NUTRIAL per head per day. Administer once daily, during 5 days.

Dairy cattle calving preparation and start of lactation: Top dressed on daily ration 150 ml of NUTRIAL per head per day. Administer once daily, during 5 days.



**SYNERGIE EUROBEC
INTERNATIONAL LTD**
Innovative nutritional solutions
in animal production

494, rue de l'Aviation,
Trois-Rivieres,
(Quebec) G8T 5M3
CANADA

Tel.: +1 819 909-6767

Fax : +1 819 909-6768

Email : sebastienrobert@eurobec.ca

www.eurobec.ca